

AV4 UPGRADE GUIDE

ent

COMPOSITE



AV4 Upgrade

A new addition to our comprehensive hardware range at Entrance, the AV4 is a free upgrade to our customer base and will be priced the as our AV2 range.

The current AV2 & 3 options are being phased out of our range, AV4 will replace these with Contemporary, Heritage, and Electronic hardware options all available.

The latest innovation to the Winkhaus autoLock range, the AV4 has combined its best features with modernised technology giving you everything you expect from a Winkhaus locking system

Always compliant and always precise; the autoLock AV4 meets the requirements of the PAS24 standard and is approved through Winkhaus by the Police 'Secured by Design' security initiative.

Using a magnetic trigger system the AV4 multi-point locking system automatically deploys its security hooks when the door is closed, taking away the need to lift a handle or turn a key to lock your door. The optional innovative Day Latch feature offers instant access when needed over a short period of time by blocking the magnet allowing the door to be easily pushed open, all by flicking a simple switch!

A derivative of the market leading AV2, the AV4 has is an evolution of its predecessor and now offers 40% lower opening forces along with the widest installation tolerances, reducing the need for keep adjustment throughout the life of your door.

Variants Available

AV4 autoLock

AV4 autoLock Heritage Plus

AV4-E

AV2 vs AV4

What's new?

Widest installation tolerances

With an optimised hook design, the autoLock AV4 has the widest installation tolerances, reducing the need to adjust the lock through the life of a door, saving time and money.

Lowest operating forces

With 40% lower operating forces than the market leading AV2.

Solid anti-push back hooks

The door locking system features two solid hooks which throw automatically when the door is closed, ensuring complete engagement of the hook and security against the lock being pushed back as proven by PAS24.*

TaFa – the innovative daytime latch

The day latch allows you to open the door from the outside without the use of a key. Single hand actuation for flexible entry is useful when instant access is needed over a short period of time.

Central magnetic trigger

Located in the central position, the magnet activates the trigger once the door is fully closed which reduces the risk of damage to the door frame.

Heavy duty steel keeps

Heavy duty keeps manufactured using high grade steel, plated to comply with EN1670 Grade 5, very high corrosion resistance.



Dual steel hook system

Thanks to the dynamic contact pressure of the sealing element, doors stay flush and seal-tight for many years.

The new technology ensures that the door retains its smooth movement and can always be opened with minimal effort.

This sets the systems apart from other automatic door locking systems on the market.



*Please note: For doors with a lever handle on the outer side, the hooks will engage, but the door will not automatically lock. To lock the door, you will need to use the key to manually do this.

AV4

Centre Keep & Daylatch Function

The central magnetic trigger

The AV4 magnet, located in the central position, only activates the tracer pin once the door is fully closed, this prevents the door frame being scratched over time by the tracer pin.



Daylatch Feature

The daylatch feature prevents the hooks from firing and locking the door. This allows the door to be opened with a simple push, allowing flexibility in access over a short time period without the need to unlock the door each time.

Activating the daylatch is quick and easy, simply move the blue switch up and down to switch between modes.



AV4 Autolock

Feature Summary

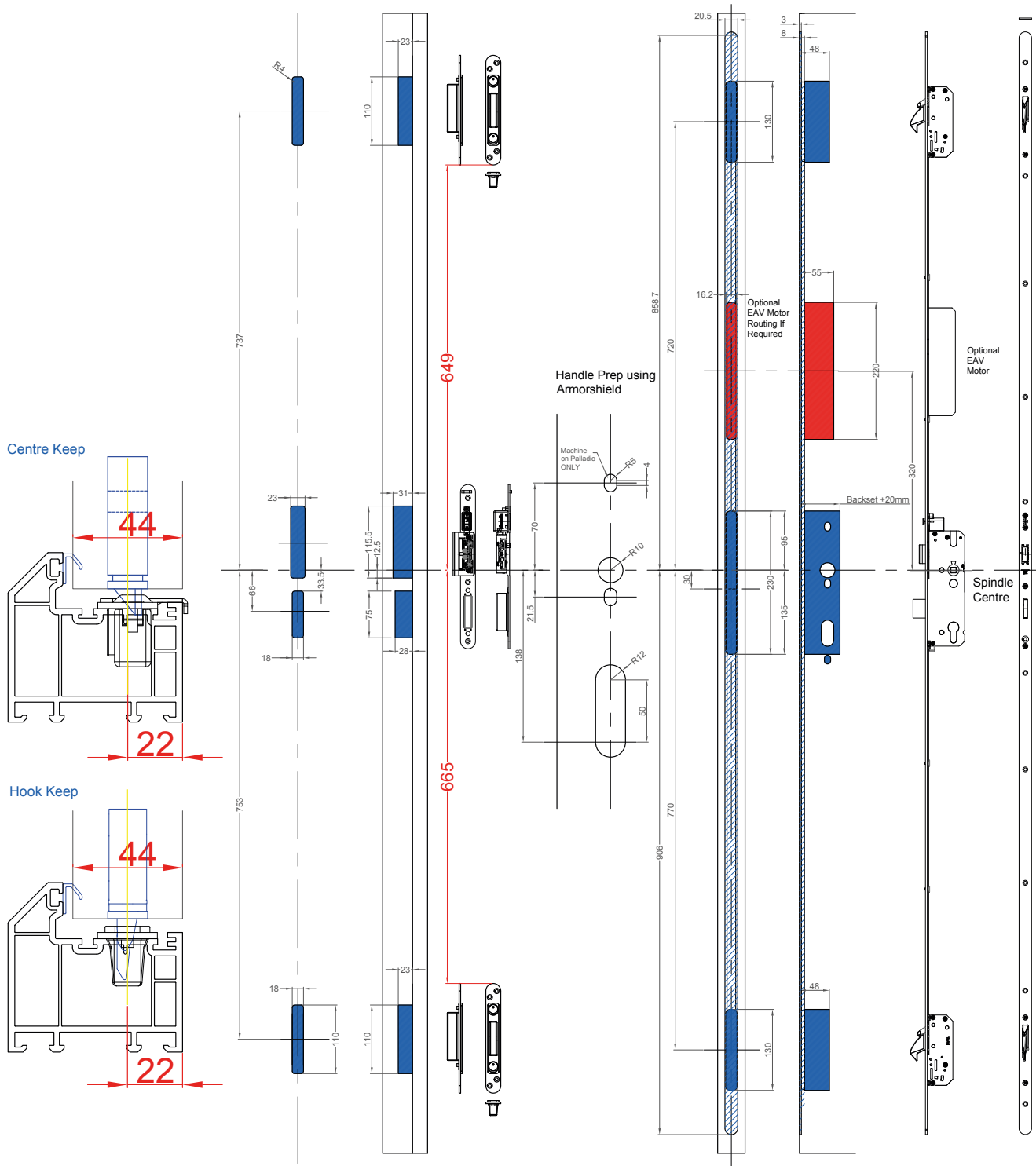
- Automatic locking system with availability for day latch function for easy access during the day, holding door closed but can easily be pushed open whilst on day-time mode
- Magnet triggers hooks to drop on contact, reducing risk of frame damage
- Additional deadlock security by turn of key
- Cylinder positioned at hip height, perfect for contemporary and traditional style doors
- Door can be operated by thumbturn cylinder or by lever handle
- Future proof locking system with ability to upgrade to AV4-E, and perfect to use with smart handles
- Non-Handed lock simplifies the ordering, manufacturing and inventory process
- 40% less operated forces than its AV2 predecessor
- Optimised hook design giving the widest installation tolerances, reducing the need to adjust the keeps throughout the life of the door

Faceplate	16mm	20mm	U Rail 24mm	
Backset	35mm	45mm	55mm	65mm



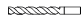
AV4 Autolock

Routing Details



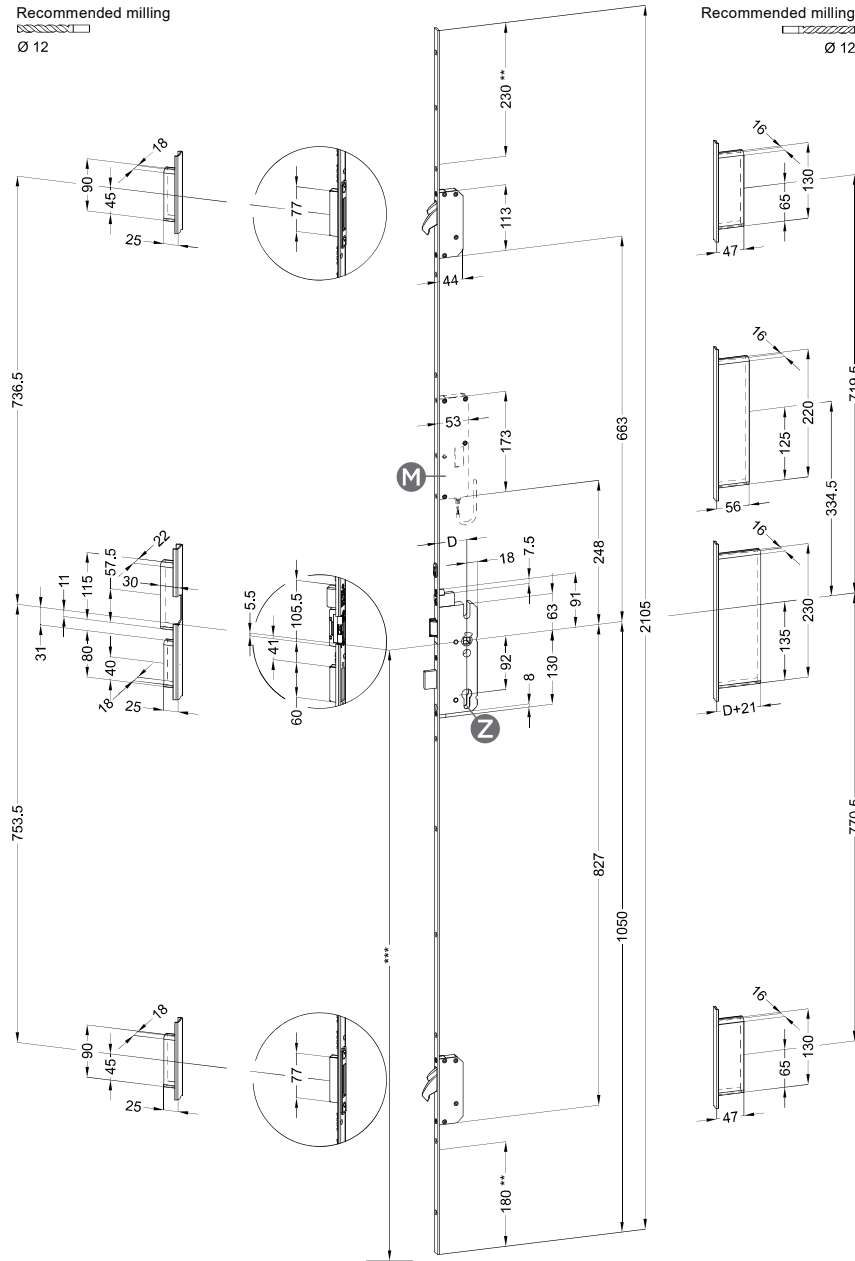
AV4 Autolock

Technical Drawing

Recommended milling

 Ø 12

Recommended milling

 Ø 12



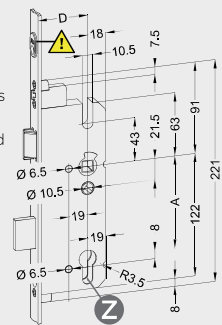
Note

The dimensions specified apply to all variant 60 (standard) autoLock AV3 automatic multi-point locking systems. Details of frame components (depending on face plate design/profile) are specified in detail in the technical documentation (group 4/5). Further drawings on request.

Lock case information

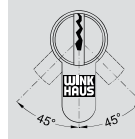


The rebate clearance limiter is important for the correct airgap and thus the function of the daytime latch → do not remove!



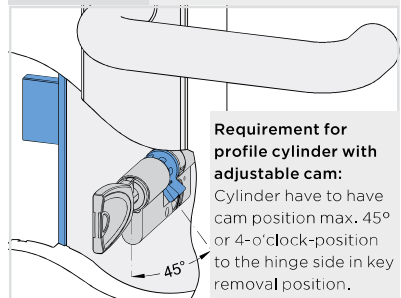
A = Distance
D = Backset
H = Rear backset

- a) key operated lock boxes
 D = 35 - 100 mm
 H = 17,5 mm
- b) all other lock boxes
 H = 18 mm



Caution

Requirement for profile cylinder: Cylinder with not adjustable cam have to have cam position max. 45° left/right hand in key removal position.



Requirement for profile cylinder with adjustable cam: Cylinder have to have cam position max. 45° or 4-o'clock-position to the hinge side in key removal position.

** = croppable
 *** = Handle height

M Optional motorized unlocking (electric-release function)



Note:

The cutting areas of locking device and frame part are not identical! Details see data sheets.

AV4 Heritage

Feature Summary

Automatic locking system with availability for day latch function for easy access during the day, holding door closed but can easily be pushed open whilst on day-time mode.

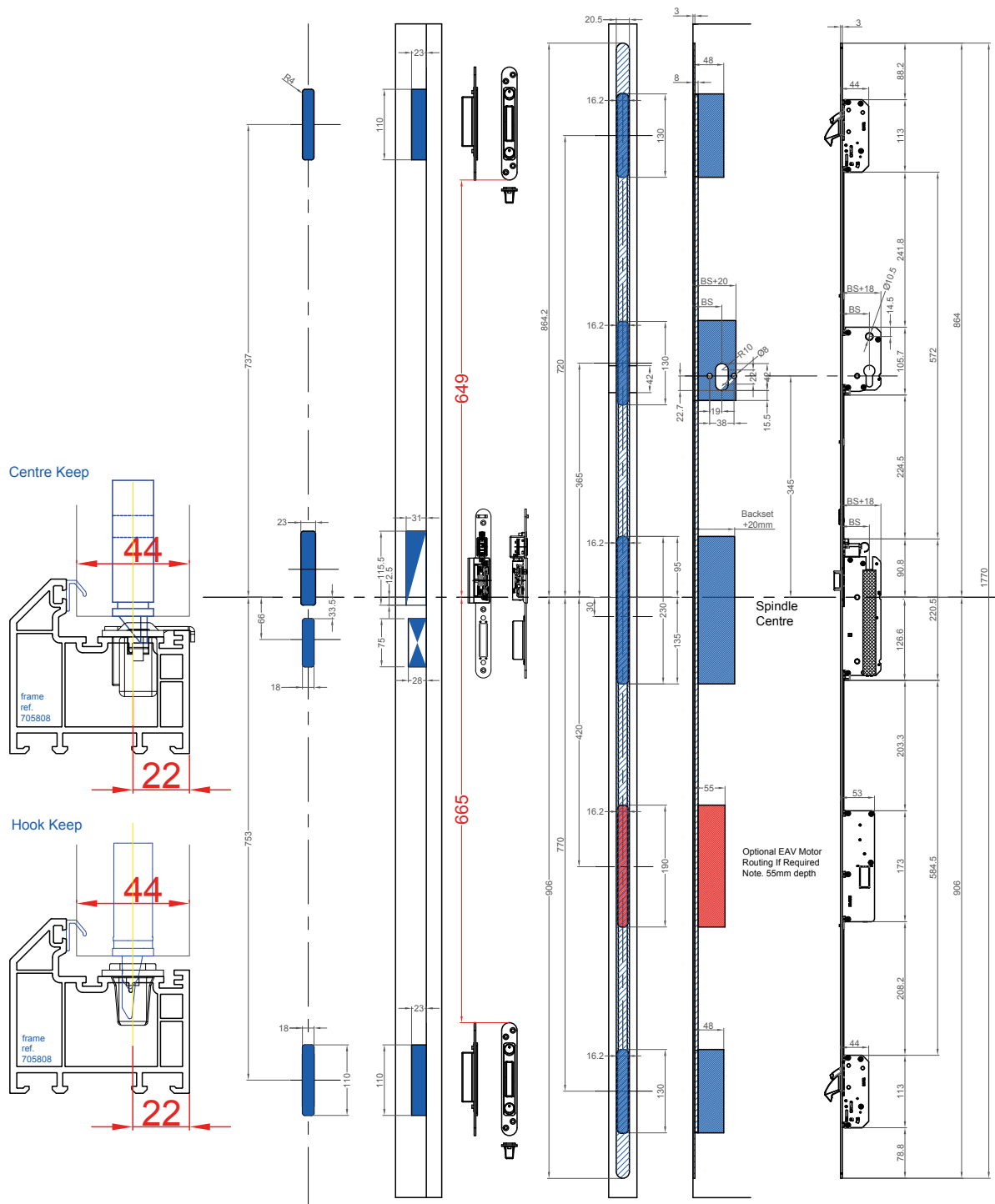
- Magnet triggers hooks to drop on contact, reducing risk of frame damage
- Additional deadlock security by turn of key
- Cylinder positioned at shoulder height, most commonly known as heritage for its pairing with a cylinder pull but becoming more popular with use alongside pull handles
- Door can be operated by thumbturn cylinder or by lever handle
- Future proof locking system with ability to upgrade to AV4-E and perfect to use with smart handles
- Non-Handed lock simplifies the ordering, manufacturing and inventory process
- 40% less operated forces than its AV2 predecessor
- Optimised hook design giving the widest installation tolerances, reducing the need to adjust the keeps throughout the life of the door



Faceplate	16mm	20mm	U Rail 24mm	
Backset	35mm	45mm	55mm	65mm

AV4 Heritage

Routing Details



rawn
. Turney
ale
:1 D.N.S

This drawing is the property of Winkhaus (UK) Ltd and is not to be reproduced or copied in any form without written consent



Denotes All STV Routing



Optional AVE routing

AV4-E

Feature Summary

The autoLock AV4 can be upgraded to a motorised door locking system using a blueMatic EAV4 motor or blueMatic EAV4+ motor; perfect for those who want to enjoy more comfort features in addition to the all the benefits the mechanical locking system provides.

When using the motorised door locking system, the locked door can be opened from the inside as usual using the door handle or cylinder and unlocked from the outside using all potential-free access control systems.

blueMatic EAV4

The blueMatic EAV4 is a 24Vdc motor that can upgrade autoLock AV4 to a motorised door locking system.

The locking system using the blueMatic EAV4 motor can be operated using access control systems such as fingerprint, keypad even face recognition and other SMART access solutions.

blueMatic EAV4+ & Winkhaus doorControl application

The blueMatic EAV4+ is a 24Vdc motor with Bluetooth and Wi-Fi (LAN) that is used on the autoLock AV4 to upgrade it to a SMART locking system. The lock is operated using the Winkhaus doorControl smartphone application.

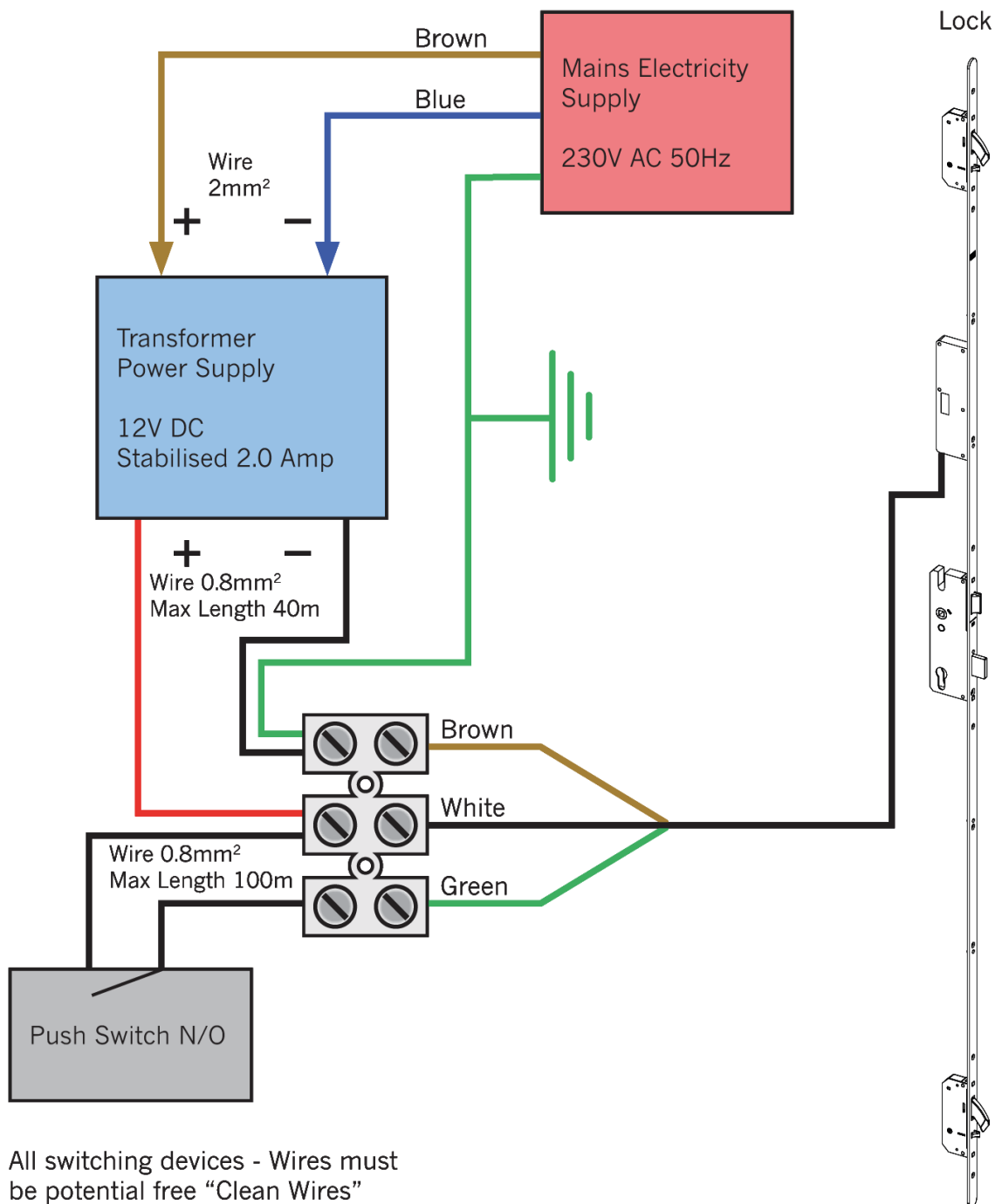
Other access control systems and SMART access control systems are compatible for use with the blueMatic EAV4+ motor.

The Winkhaus doorControl application is a smartphone and tablet application that allows control, notification and privacy options for your autoLock AV4 and EAV4+ motor through Bluetooth or Wi-Fi (LAN) connection.

AV4-E

Wiring Guide

Push Switch

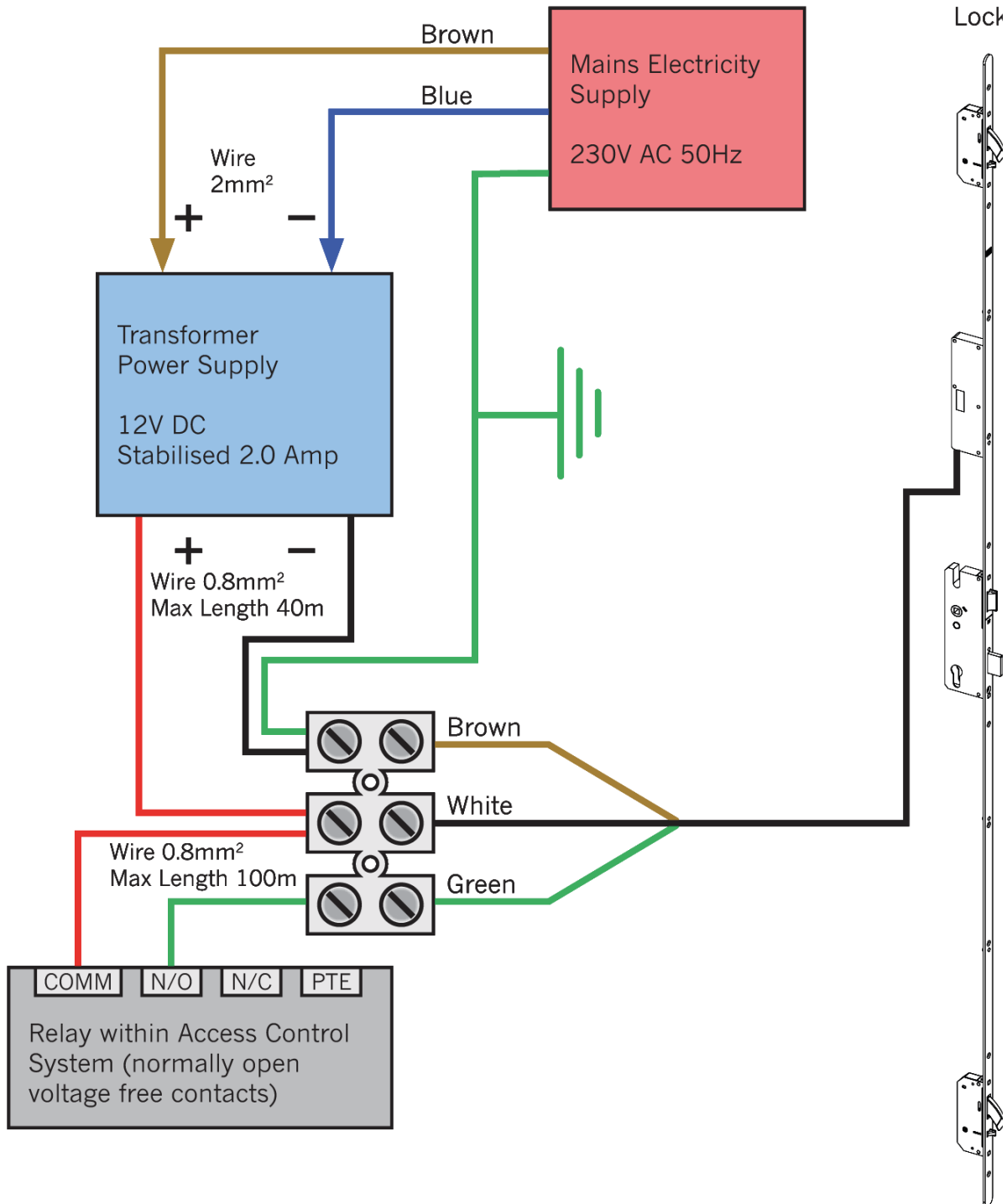


All switching devices - Wires must be potential free "Clean Wires"

AV4-E

Wiring Guide

Access Control



Contact Us

Call Us On

028 3832 3693

Email Us On

enquiries@entrancecds.com

Visit

www.entranceway.co.uk